

Tomten; bef. bollplan vid Bergtorpsskolan



Tomten sett från norr



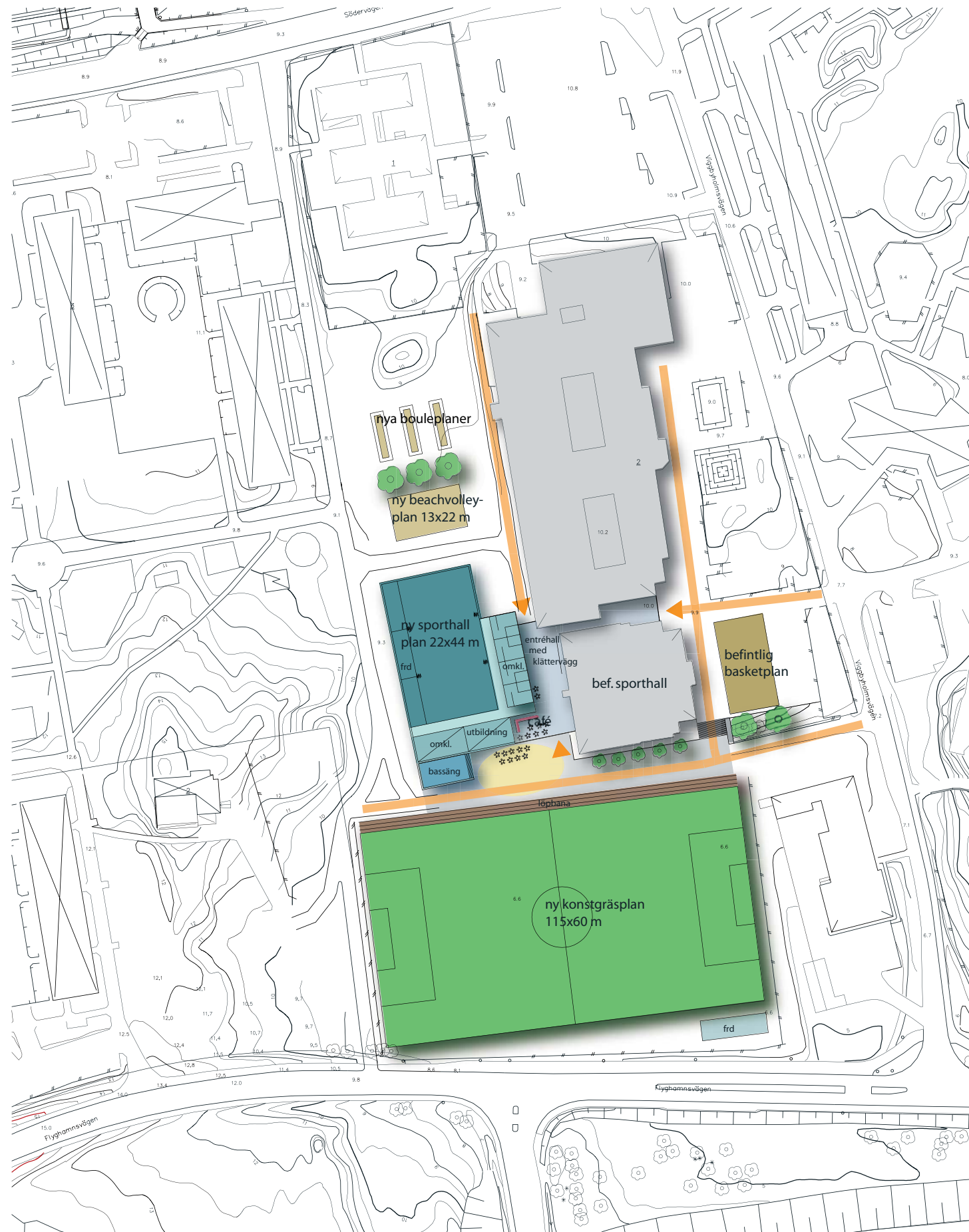
Tomten sett från väster



Tomten sett från öster



Tomten sett från söder



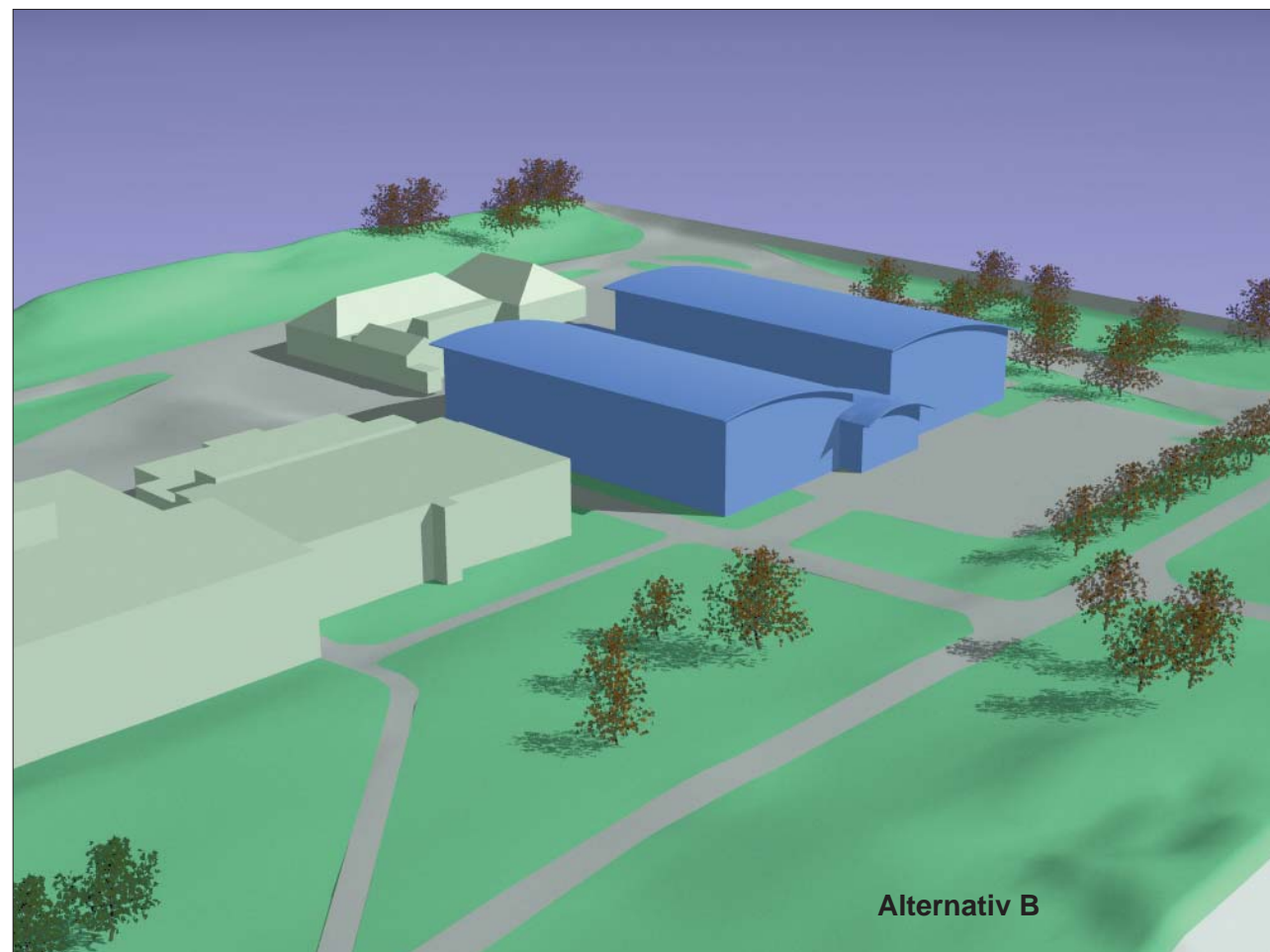
Bergtorpsskolan Förslag till nytt sportcampus
2005-02-07

Bergtorpshallen

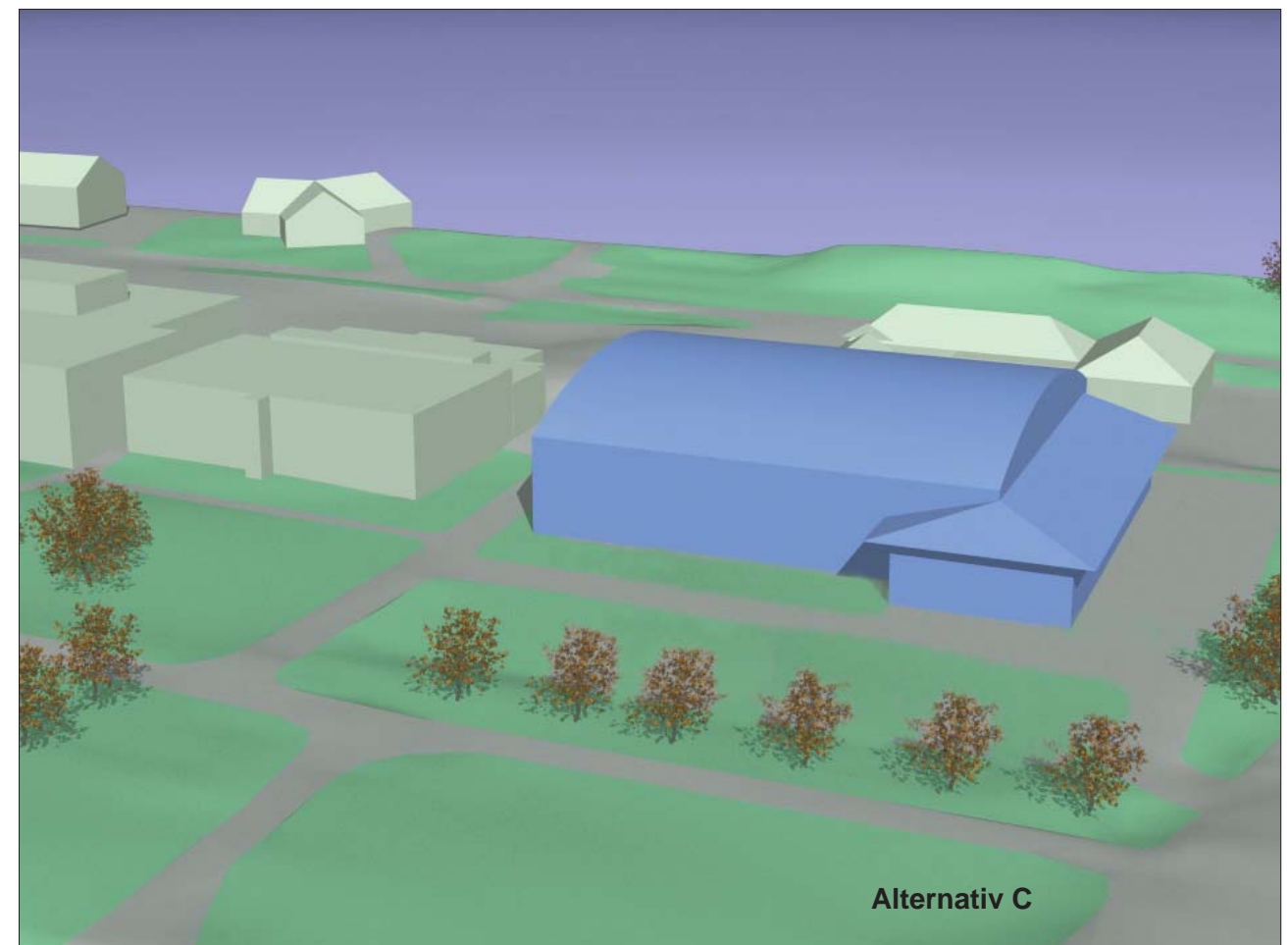
Volymstudie för Täby kommun
2006-11-06



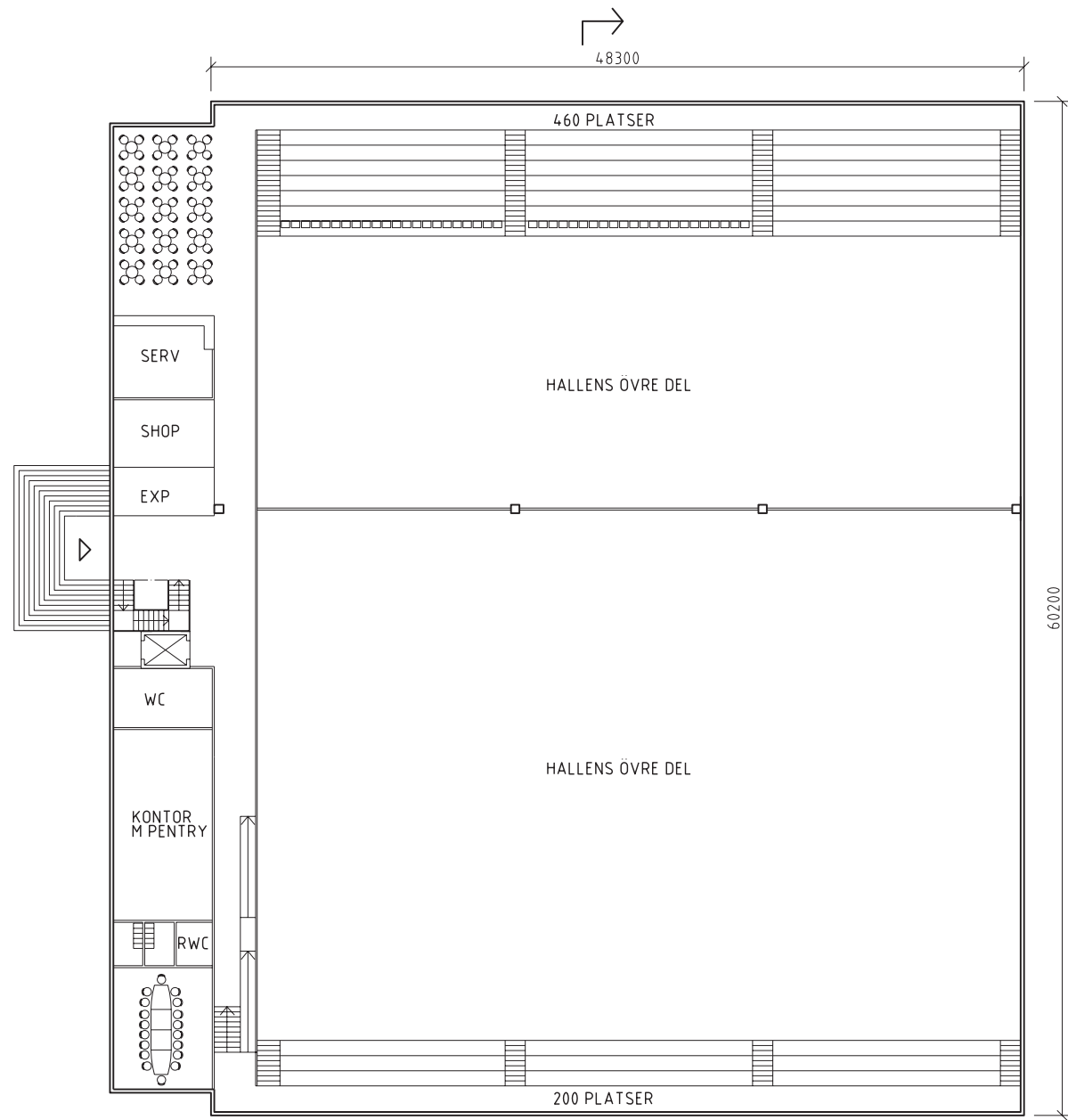
Alternativ A



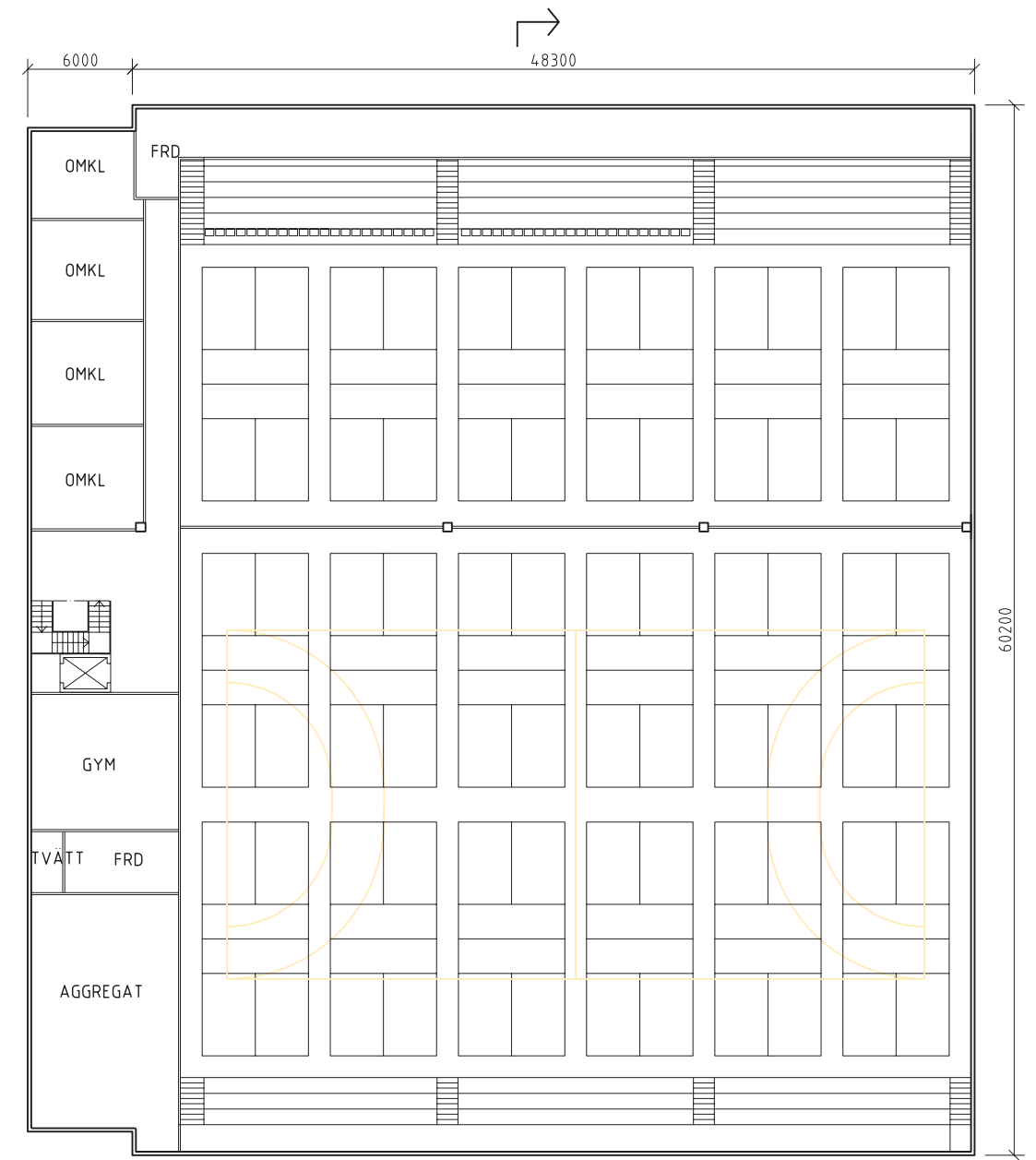
Alternativ B



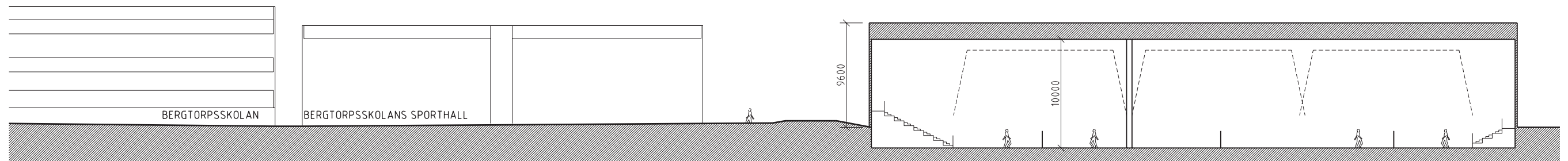
Alternativ C



Entréplan

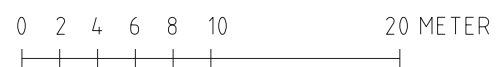


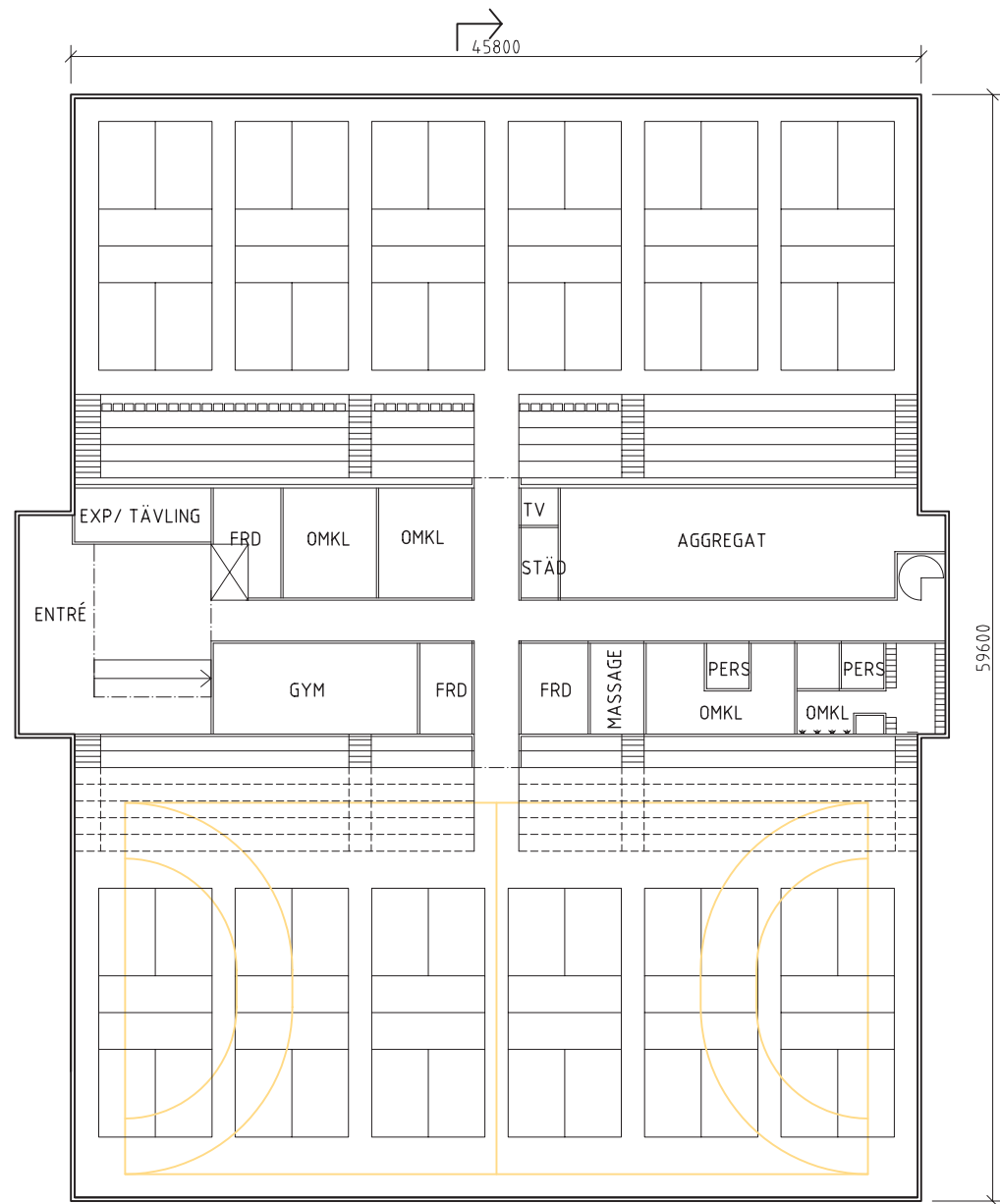
Nedre plan



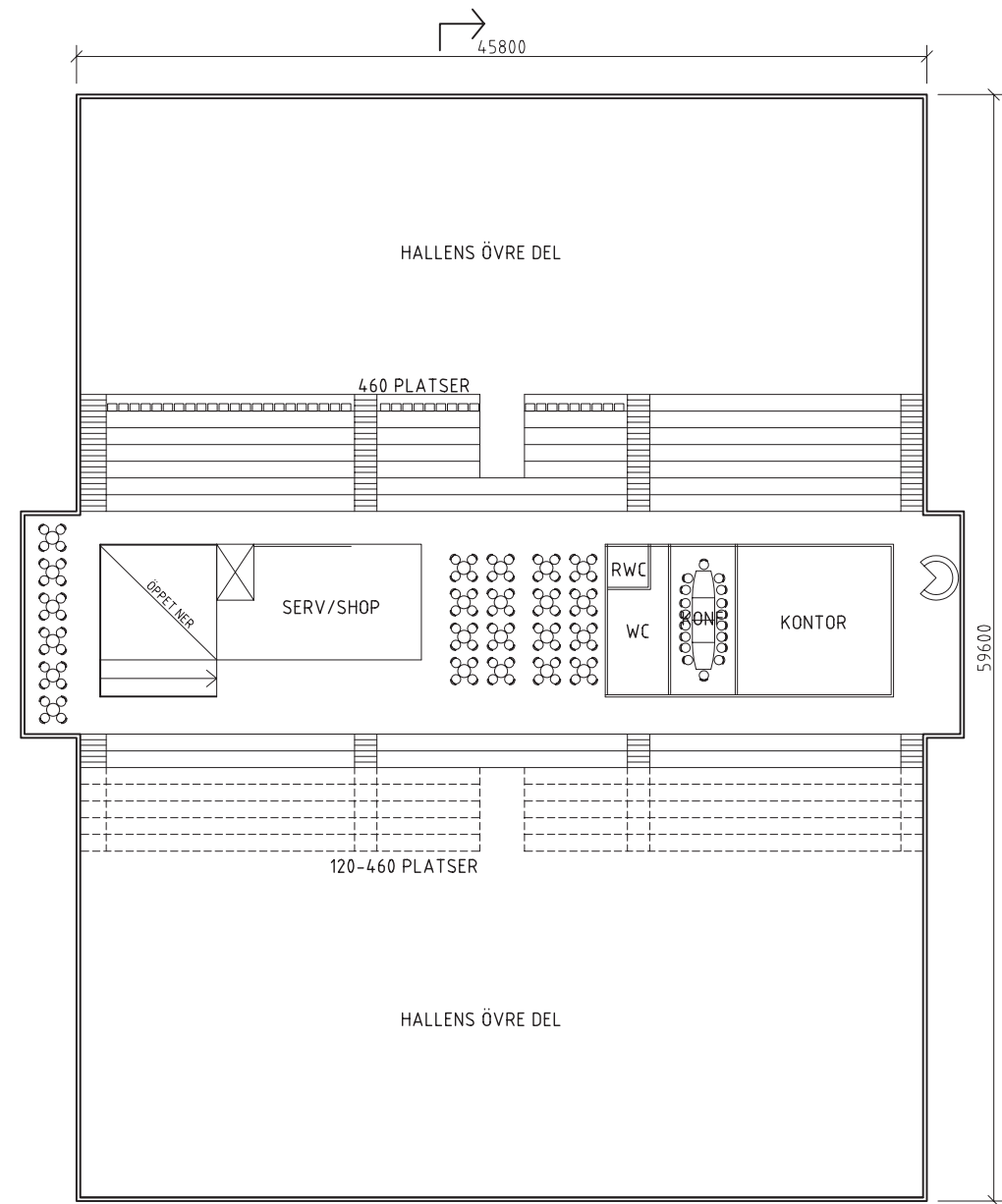
Sektion

Alternativ A, 2006,
18 banor

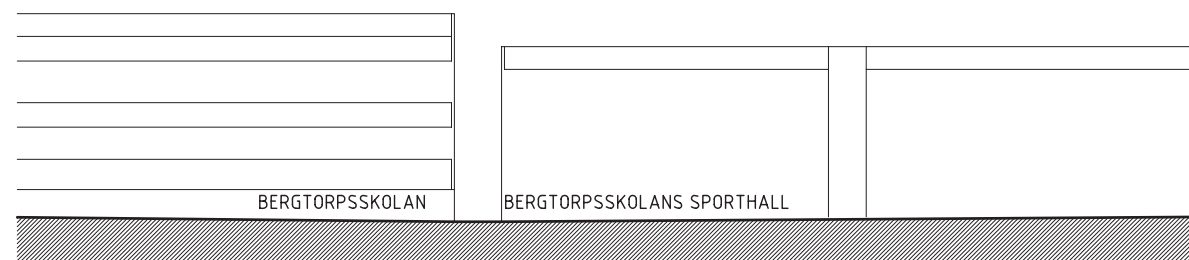




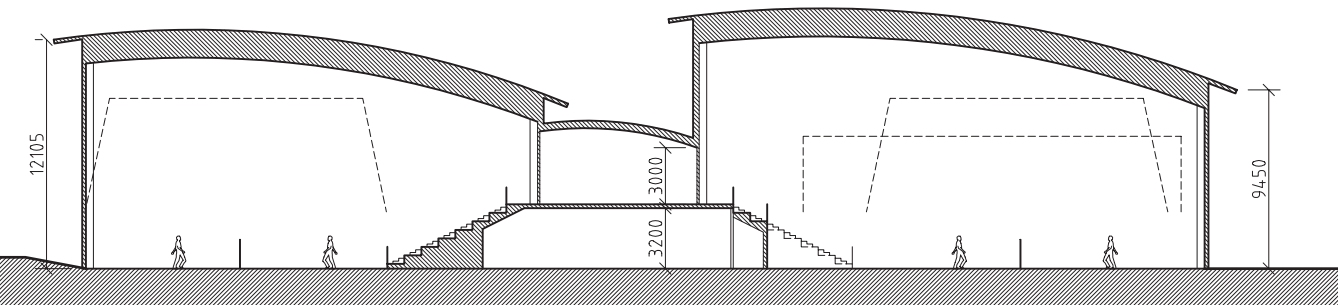
Entréplan



Övre plan

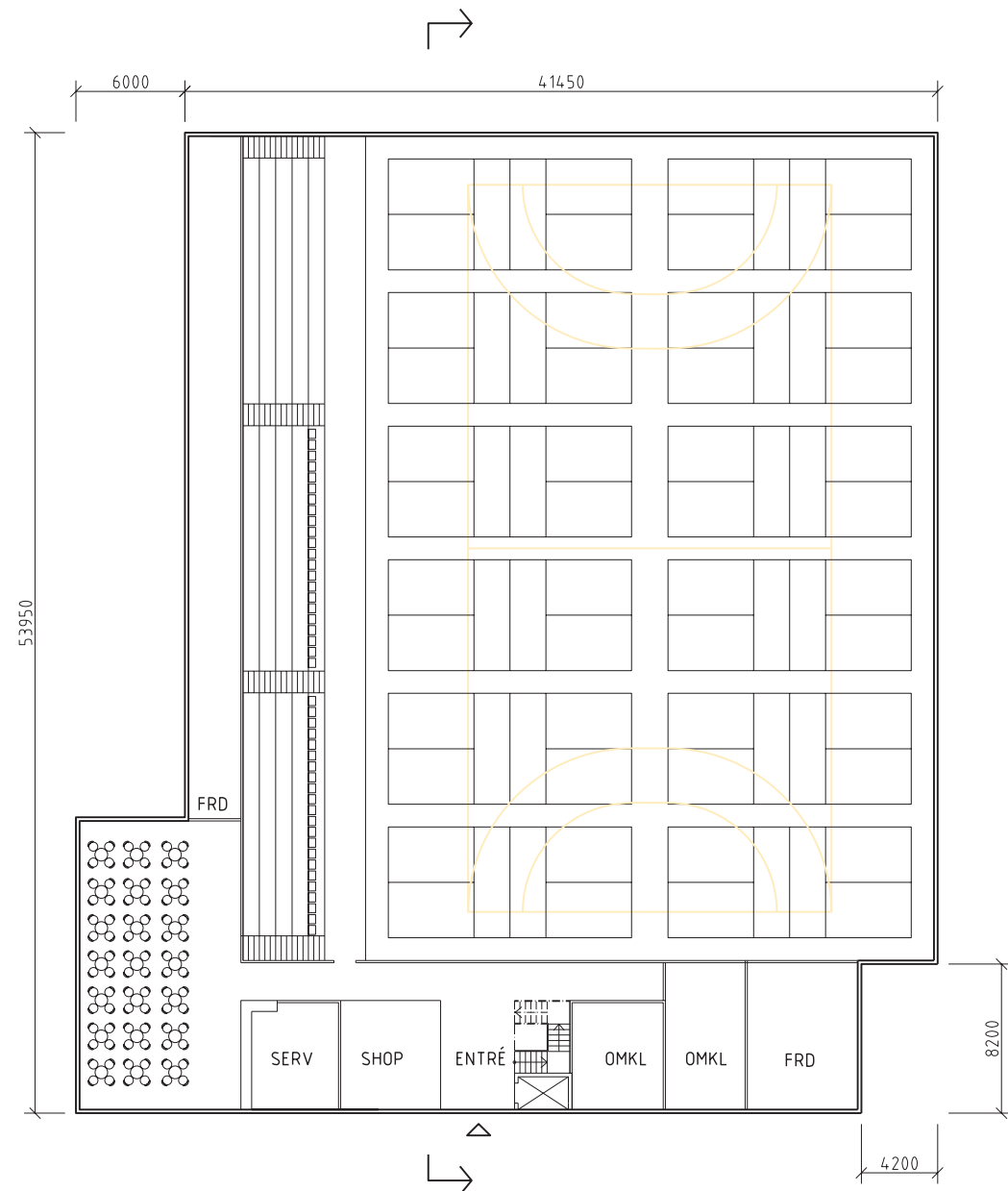


Sektion

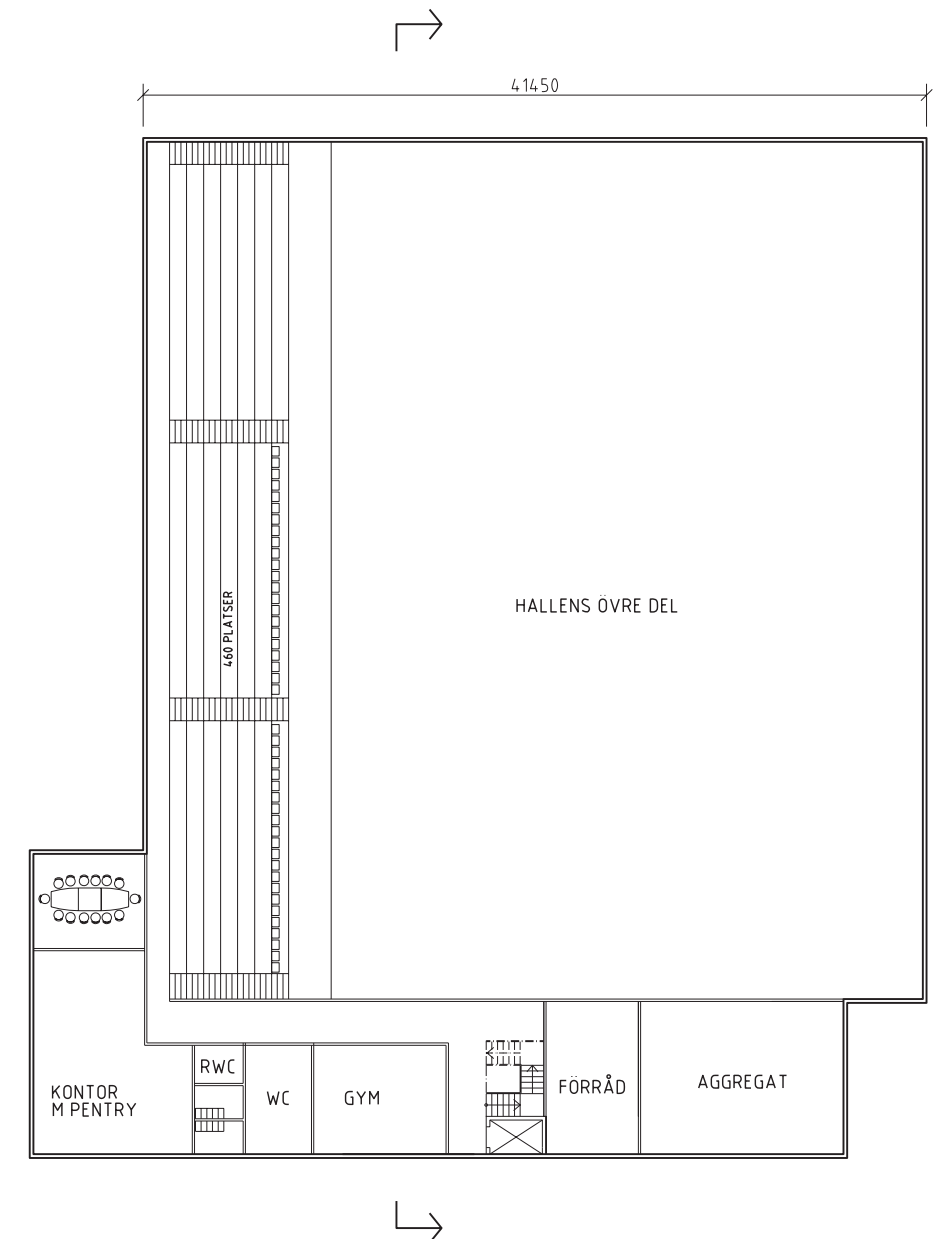


Alternativ B, 2006
12 banor

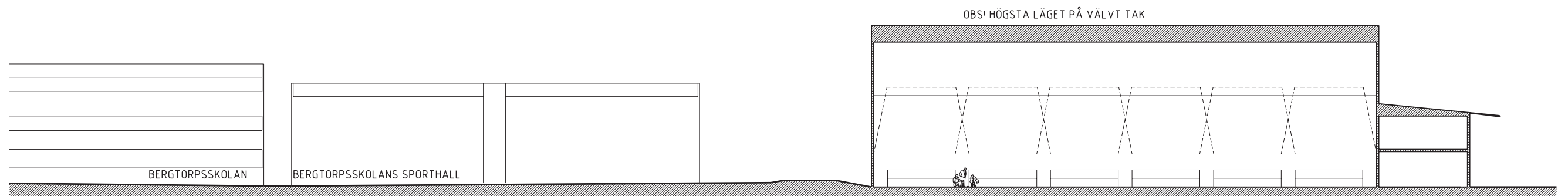
0 2 4 6 8 10 20 METER



Entréplan



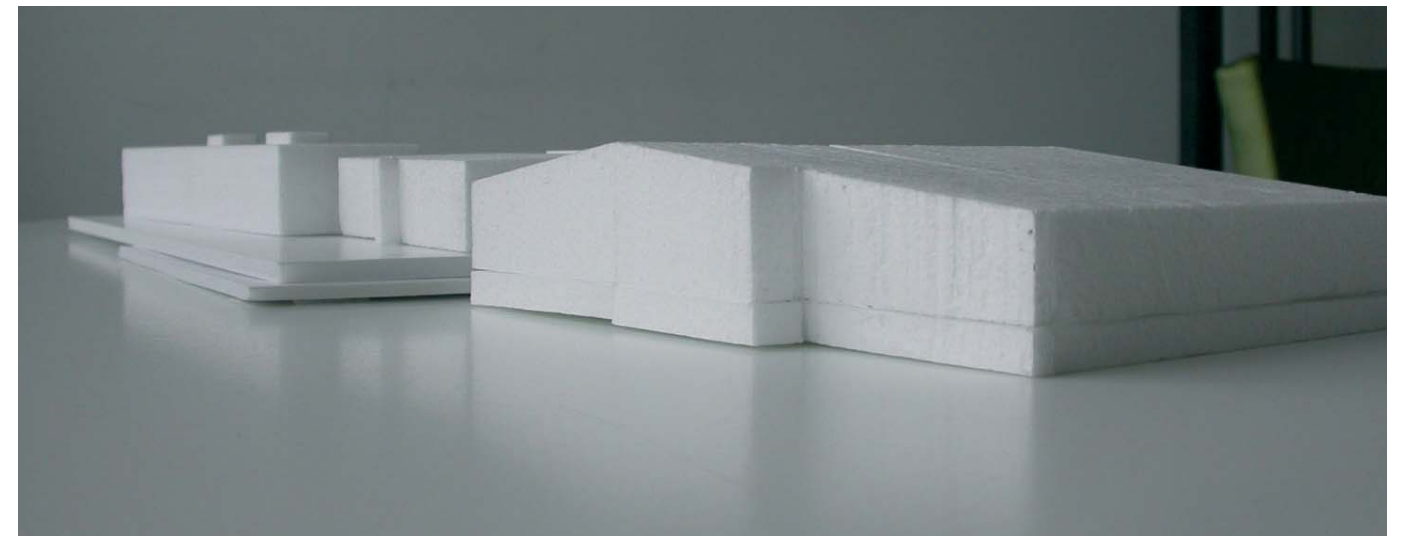
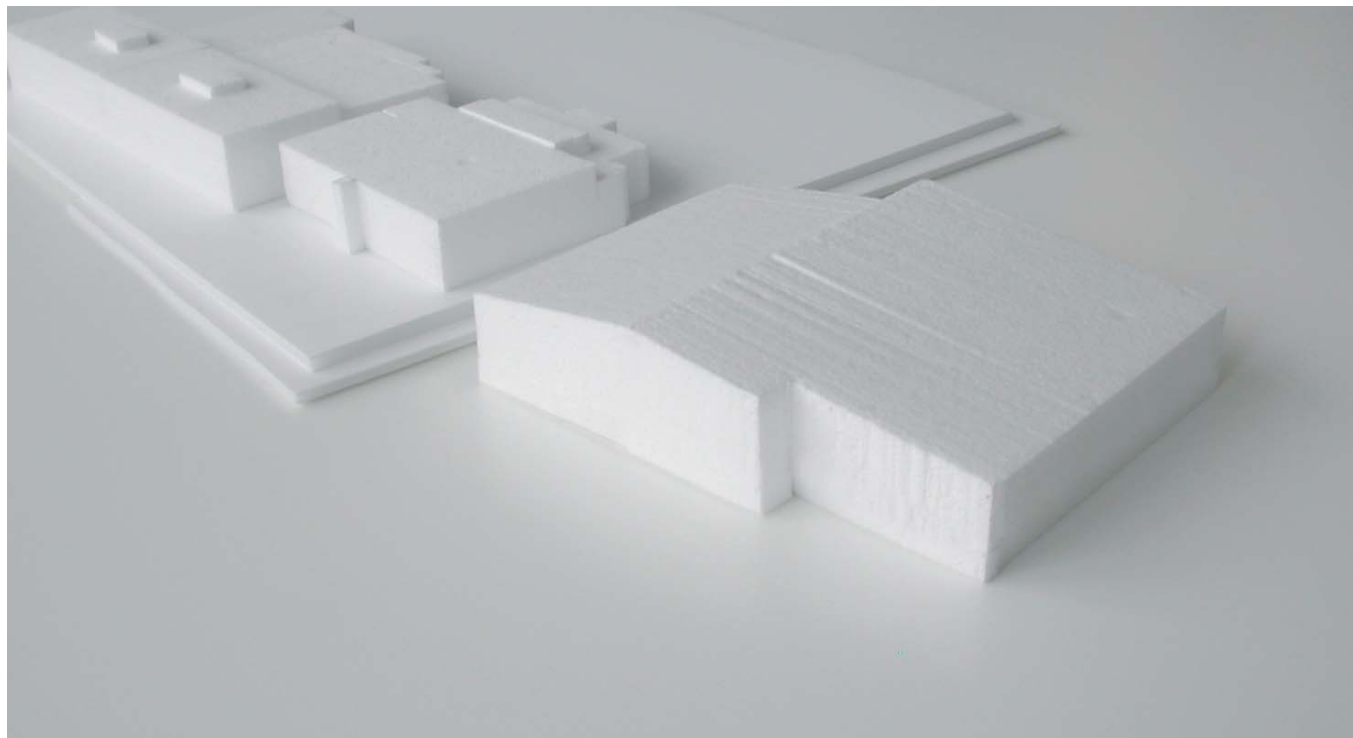
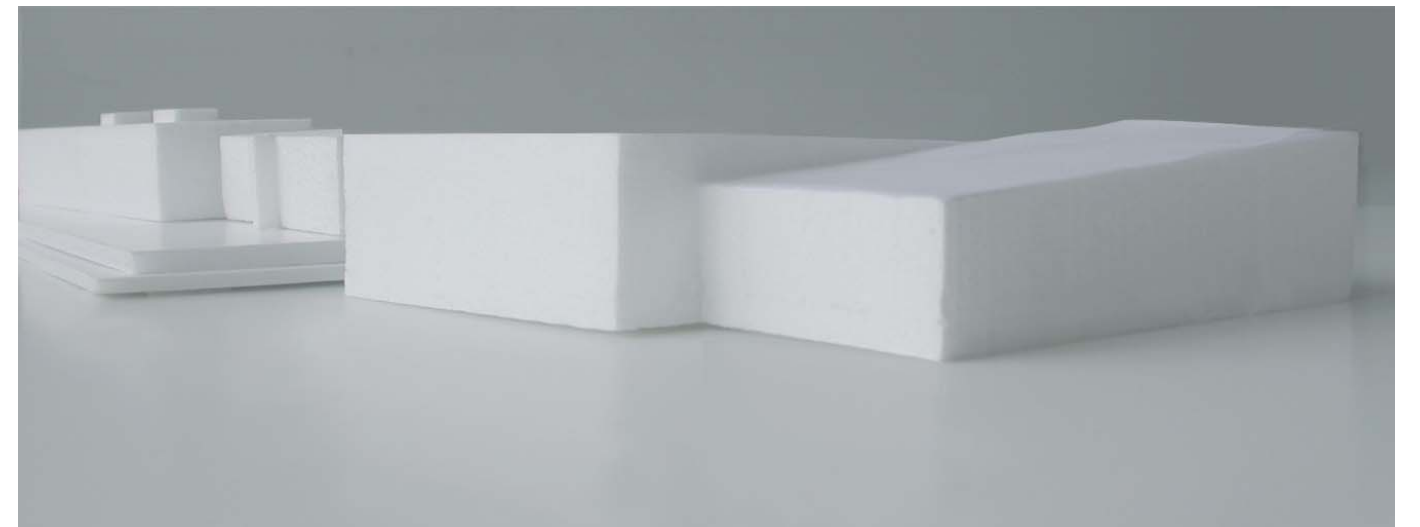
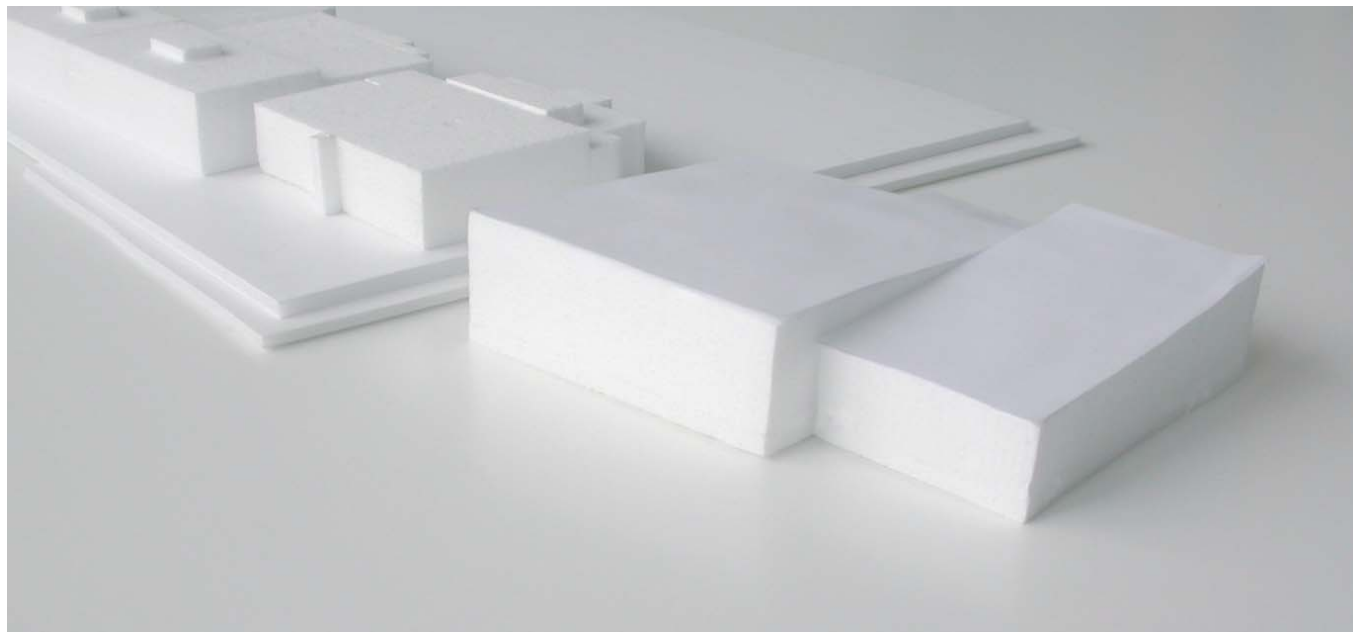
Övre plan



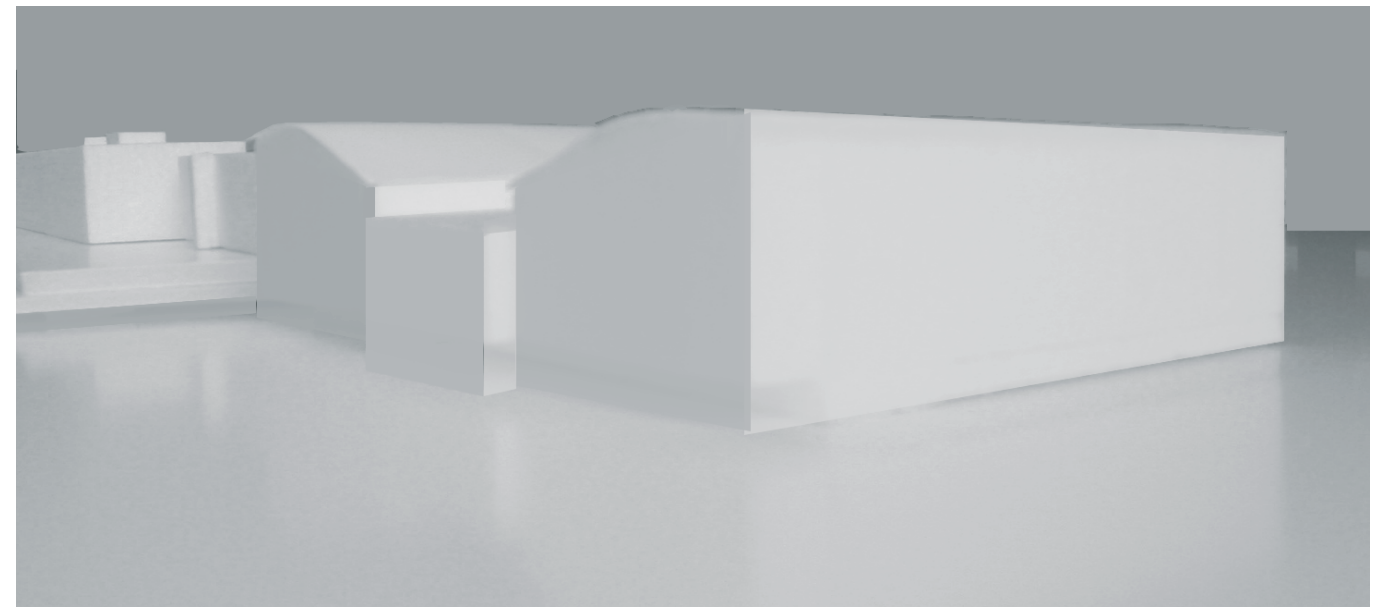
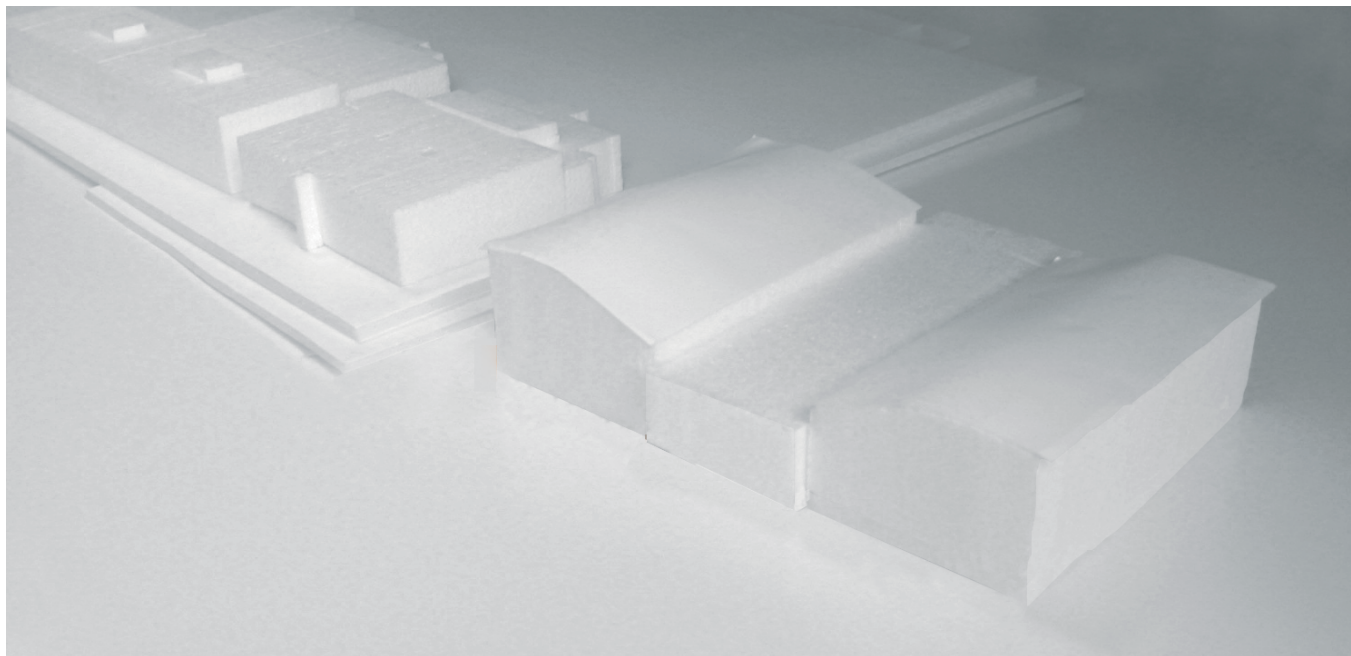
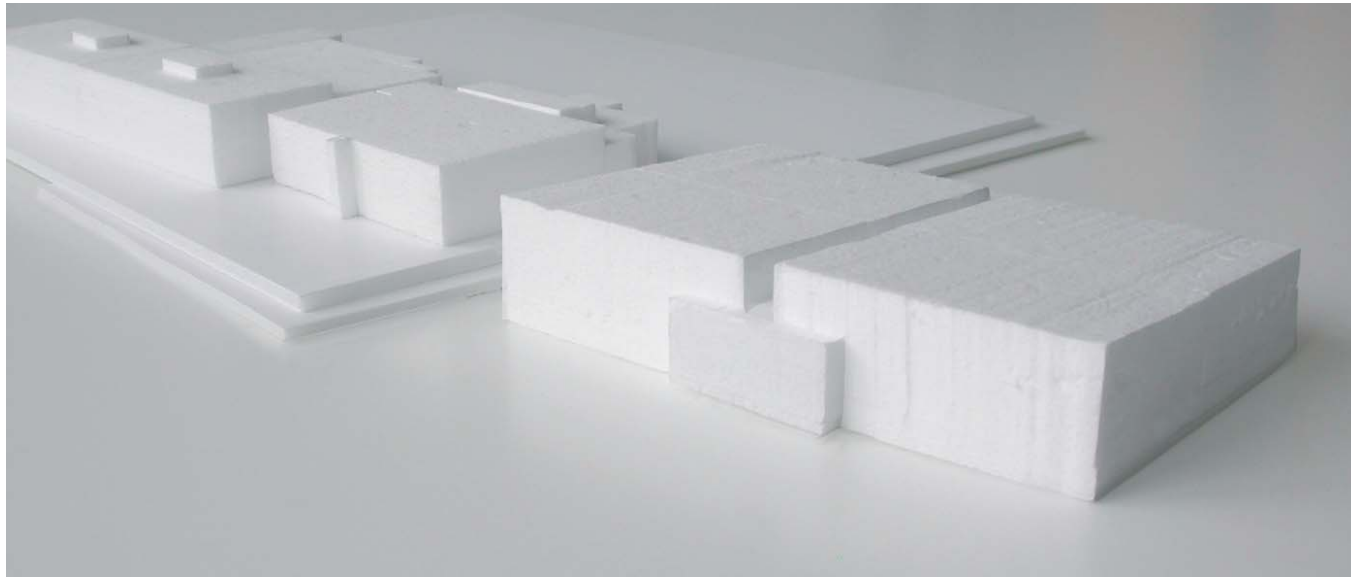
Sektion

Alternativ C, 2006
12 banor

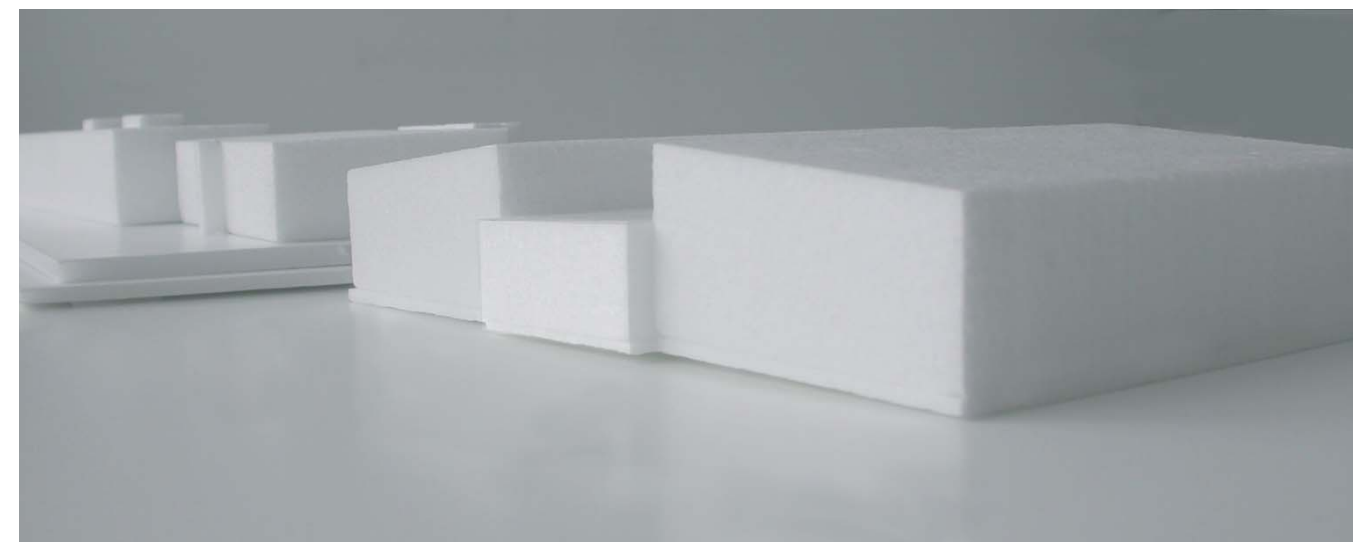
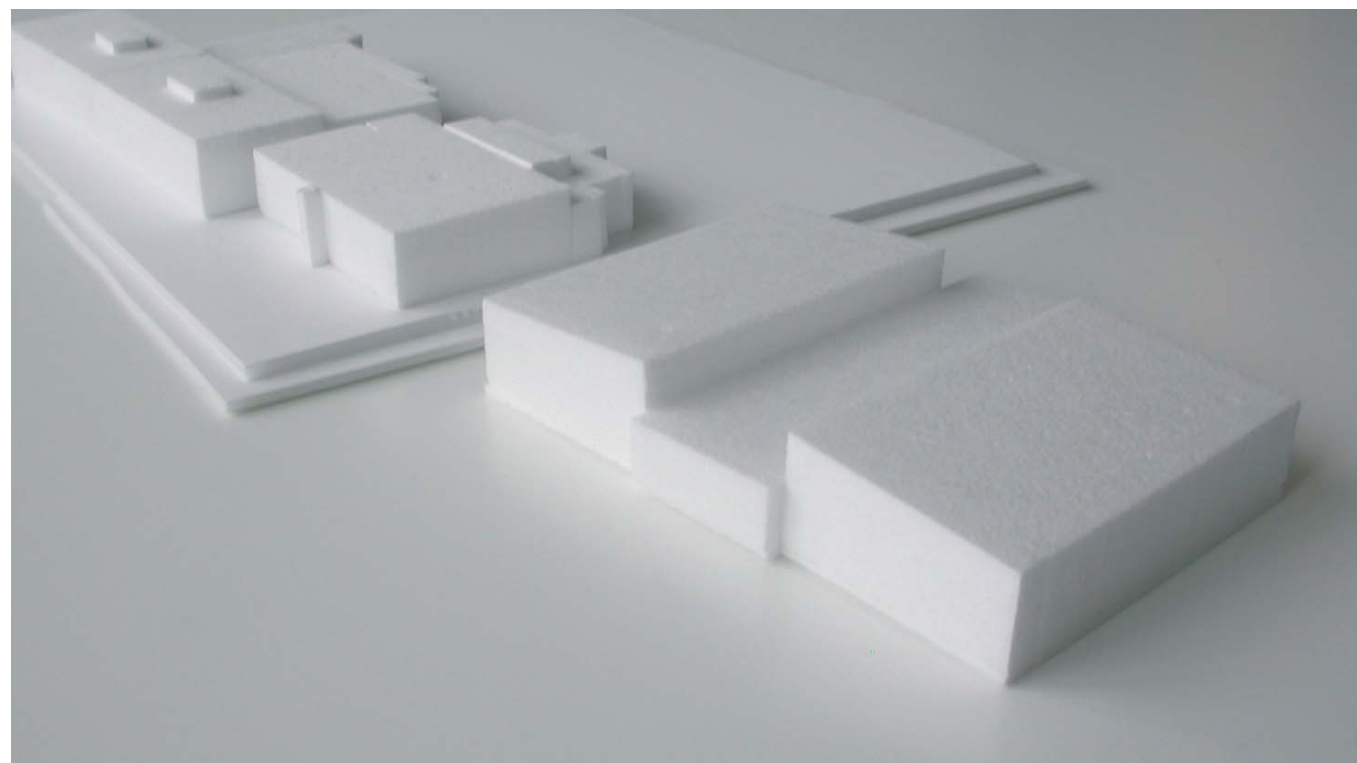
0 2 4 6 8 10 20 METER



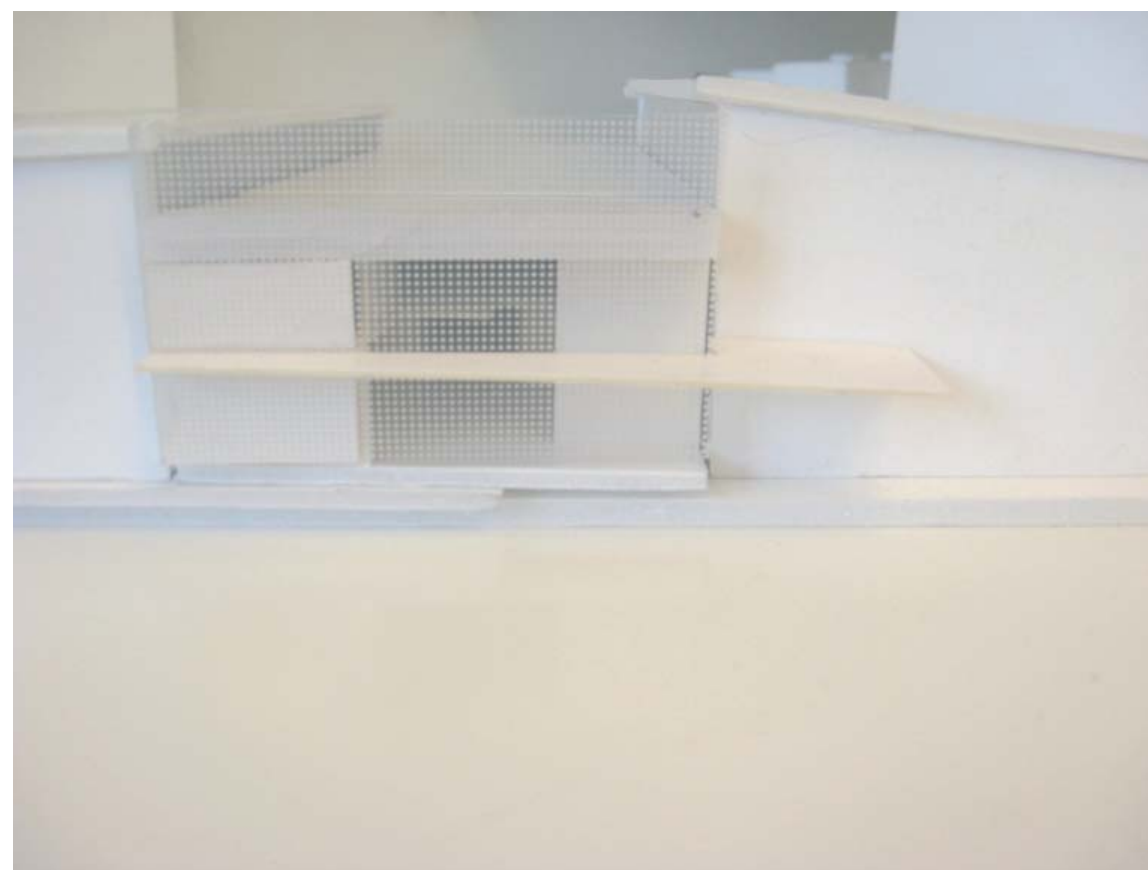
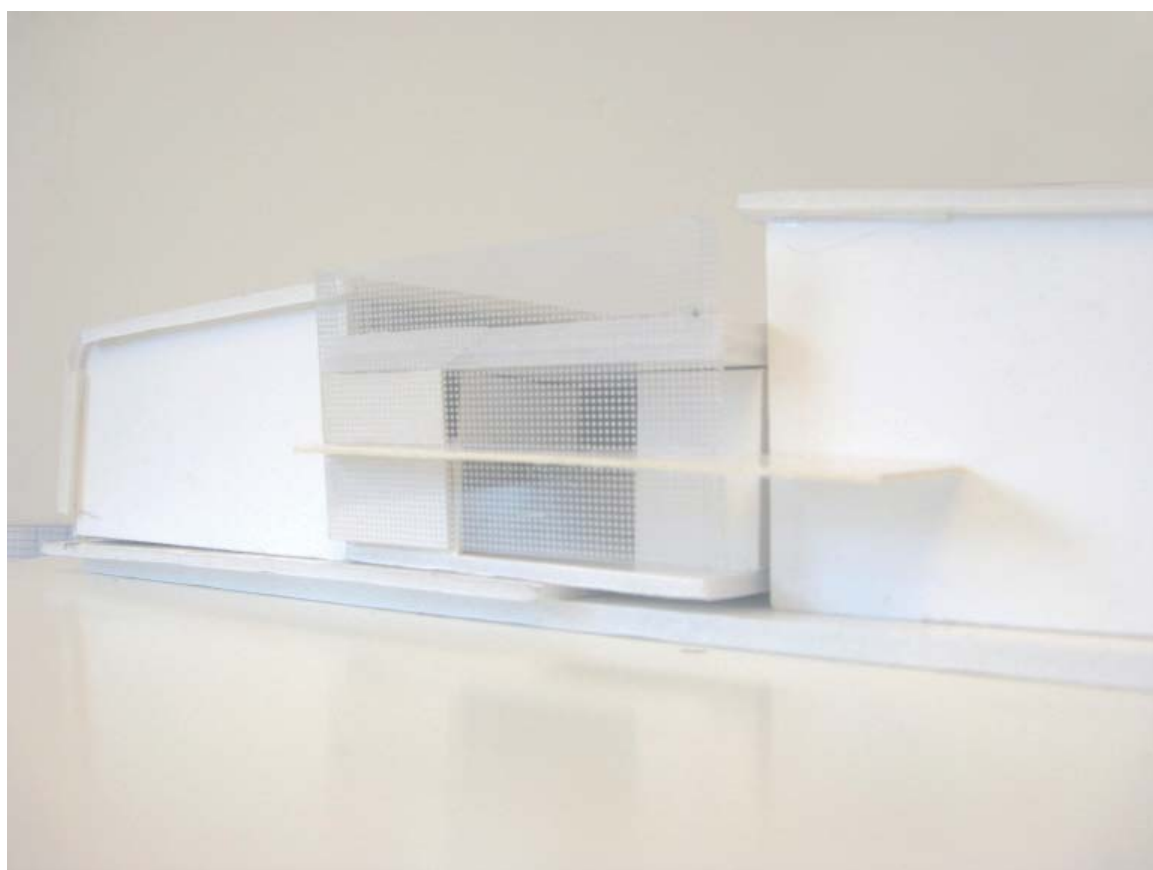
volymstudie september 2008



volymstudie september 2008

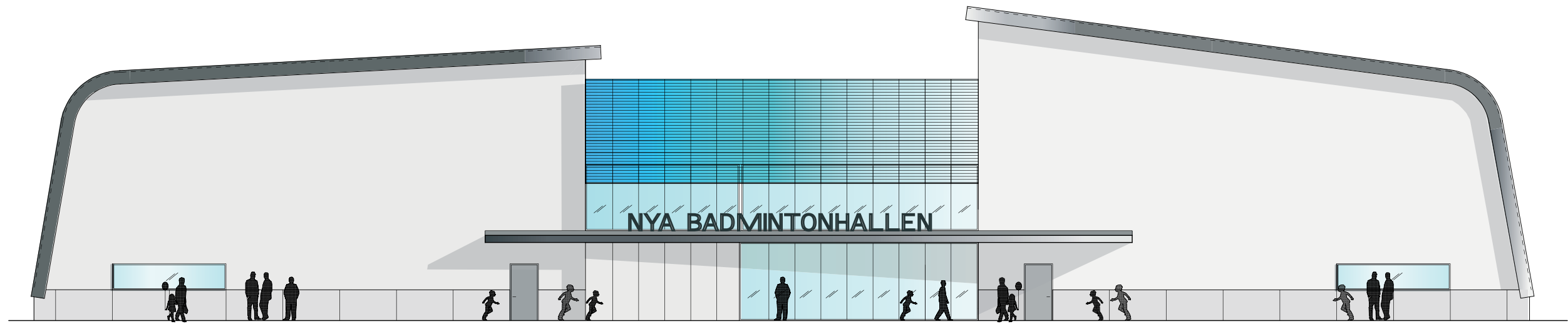


volymstudie september 2008

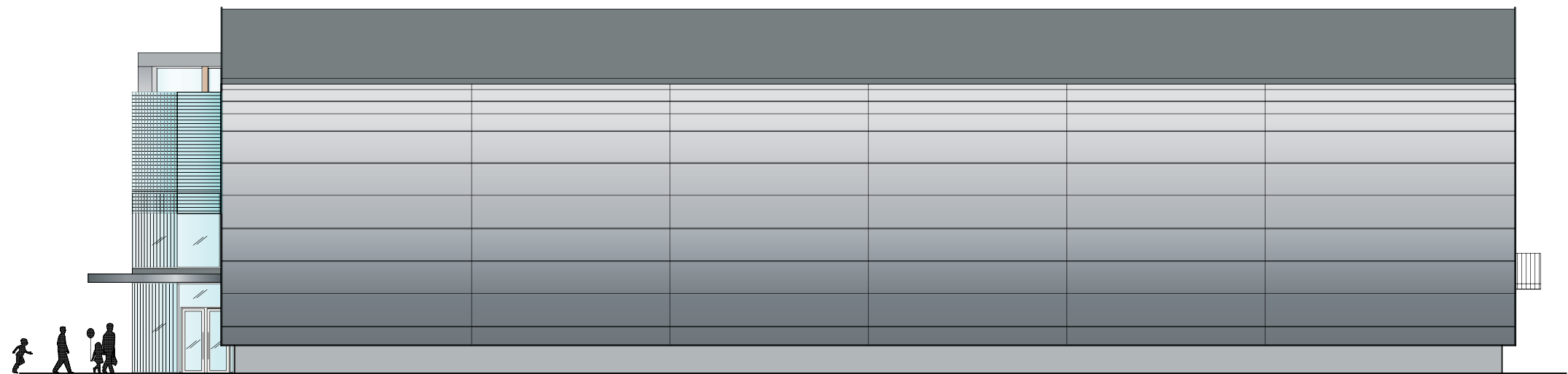


Fortsatt volymstudie, sept/okt 2008

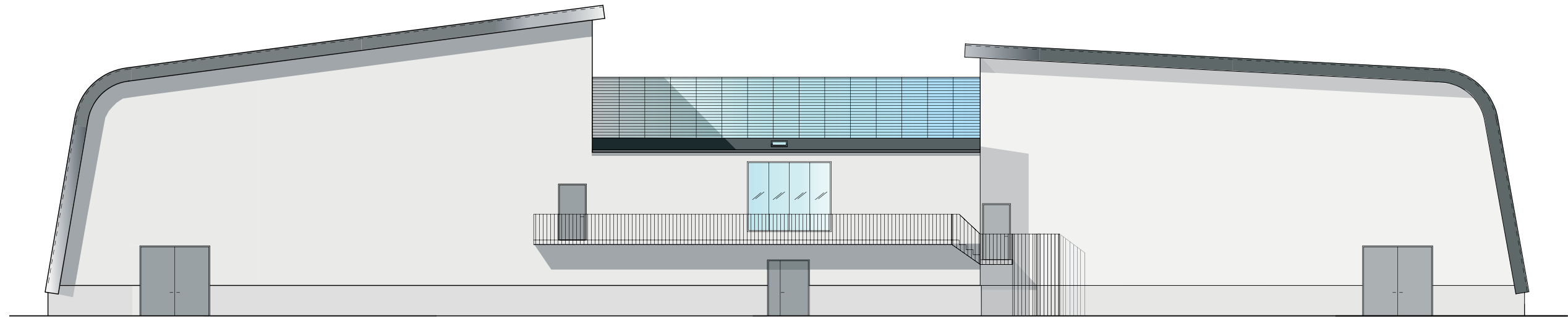




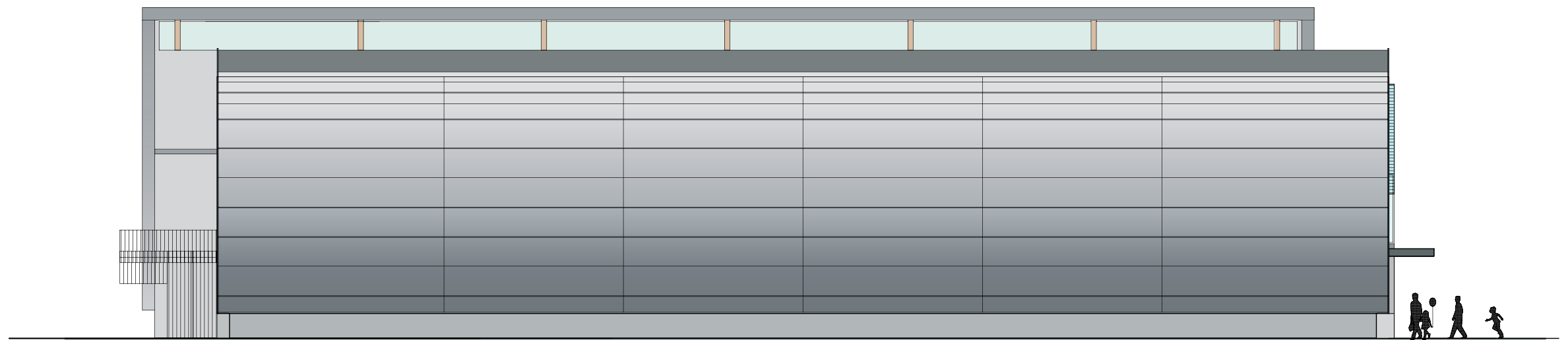
fasad mot väster



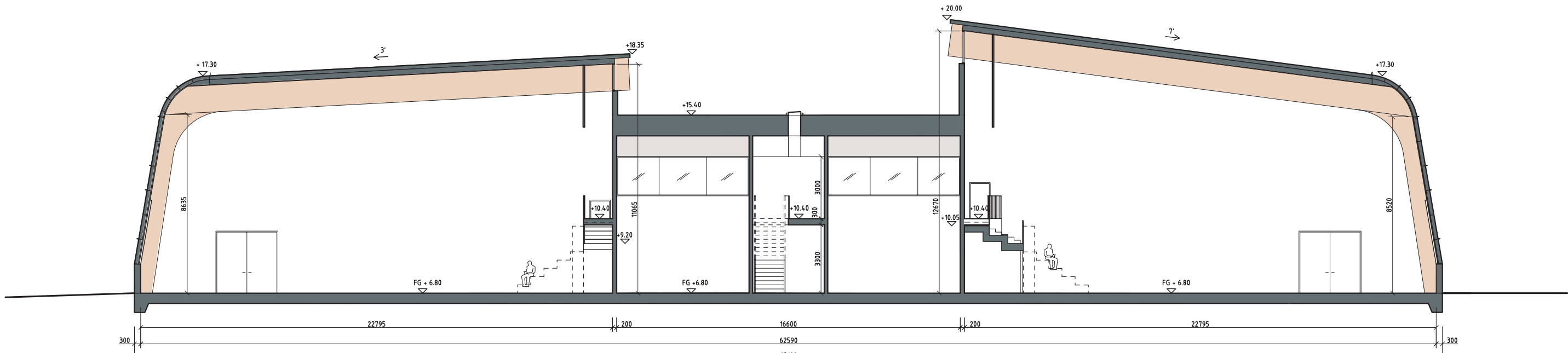
fasad mot söder



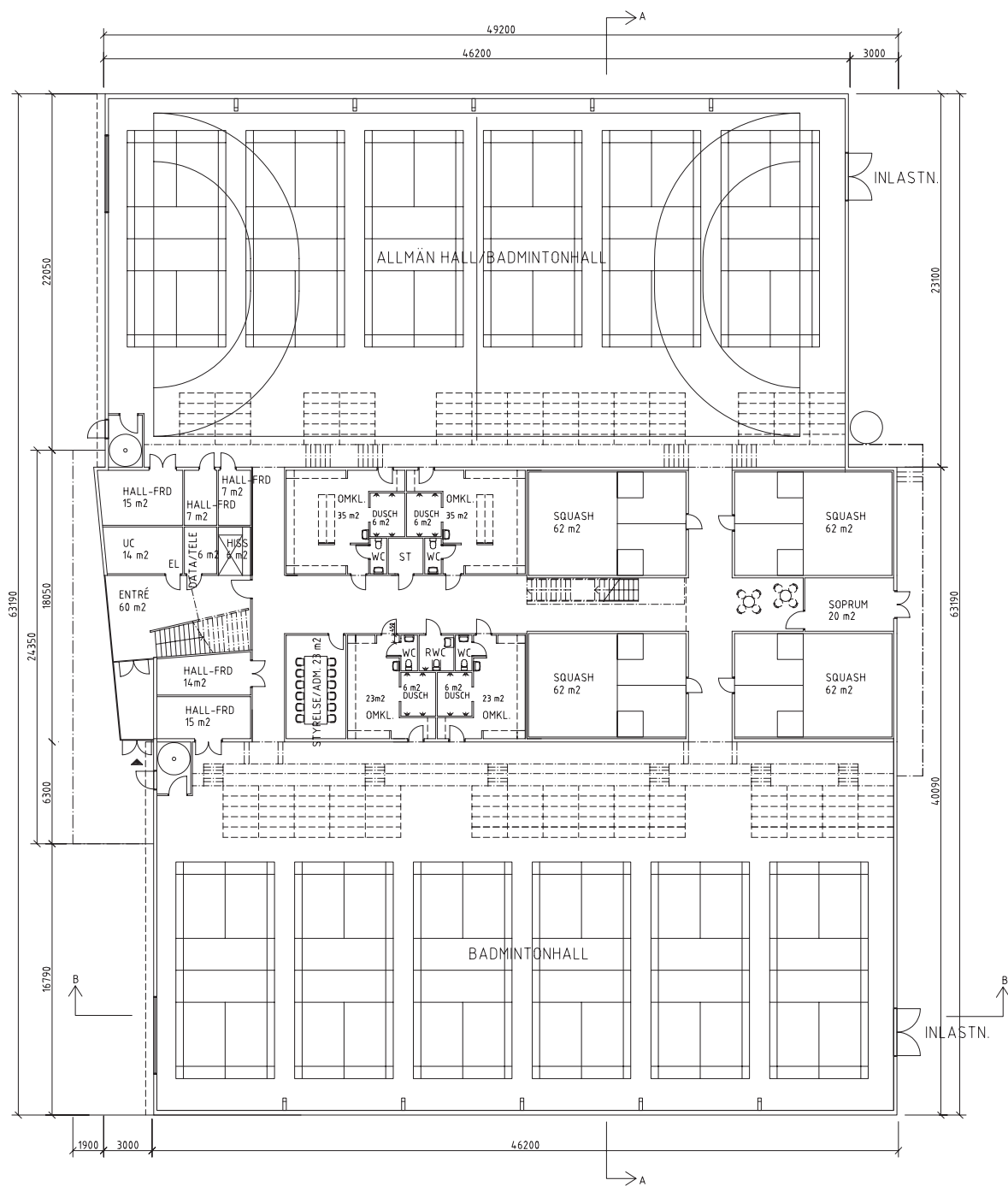
fasad mot öster



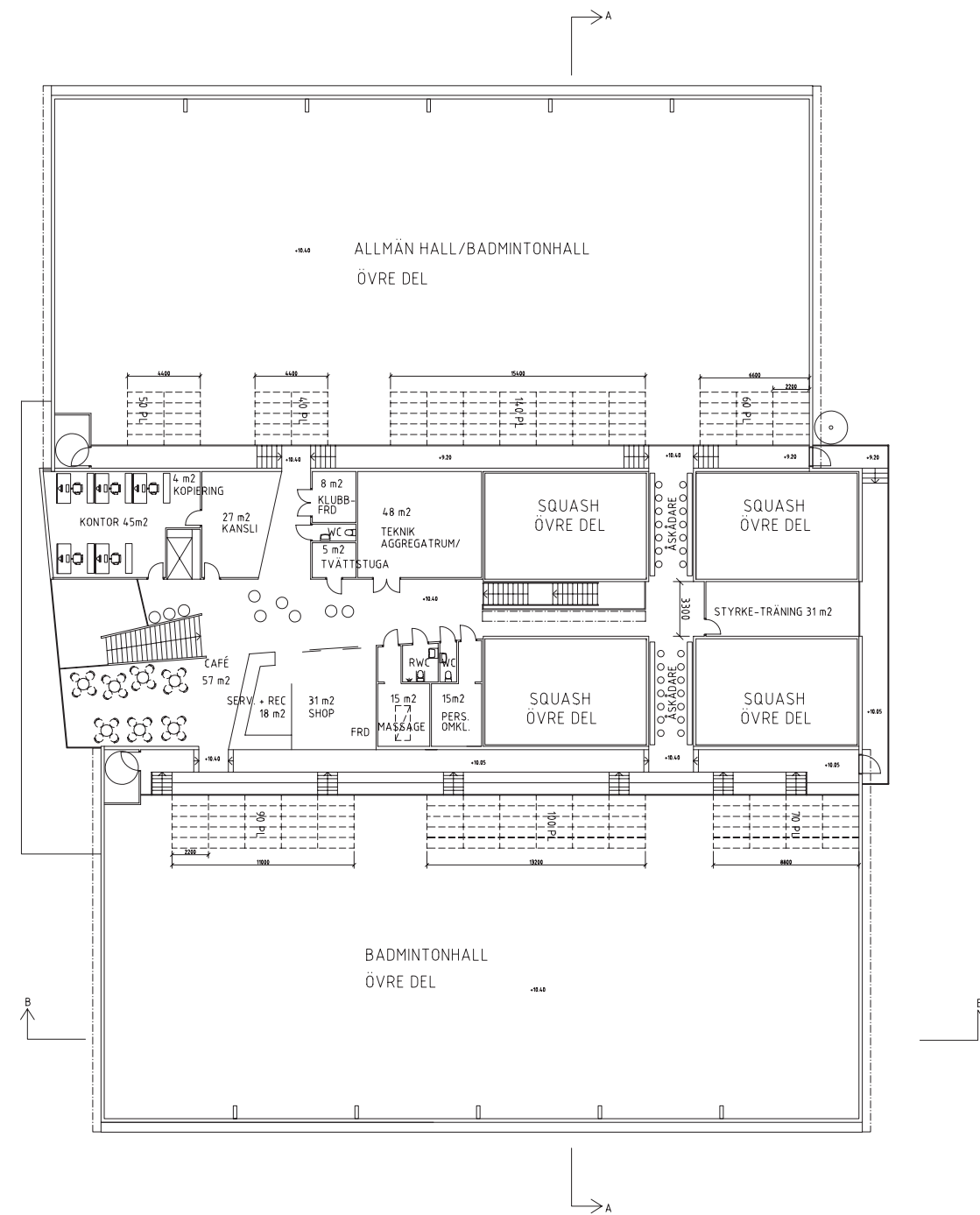
fasad mot norr



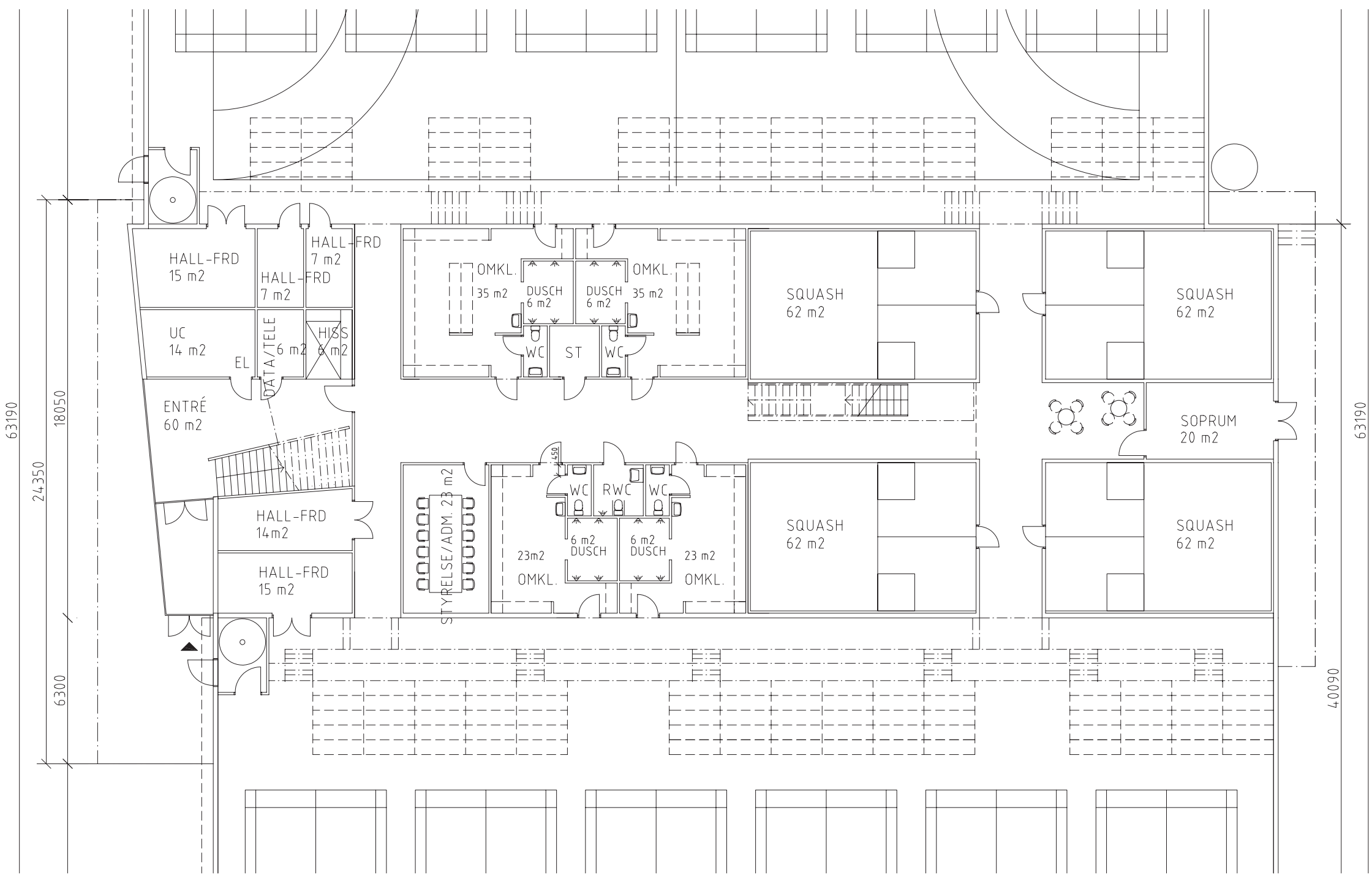
sektion A - A



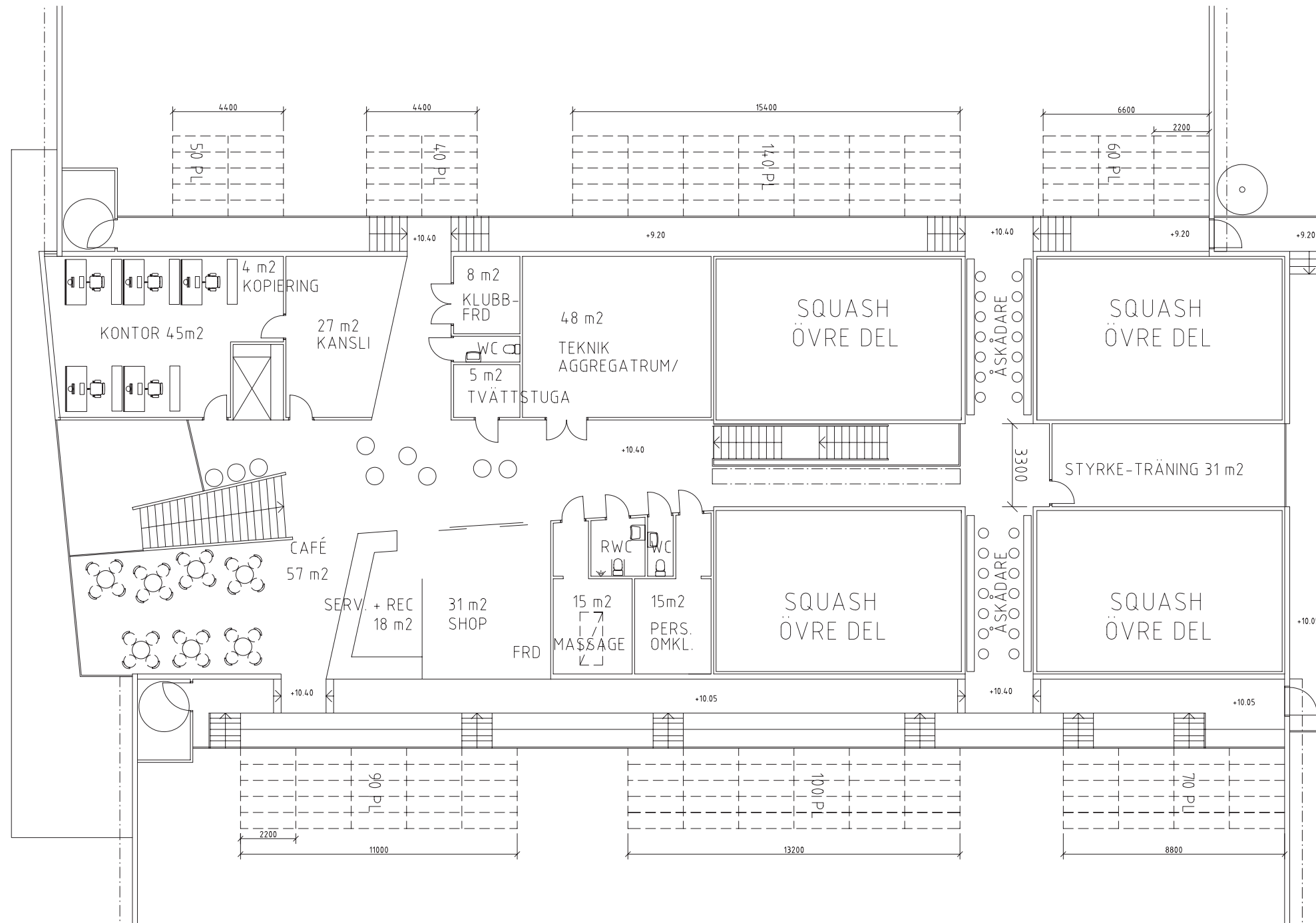
entréplan



övre plan



mittdel av entréplan



mittdel av övre plan

